

5 IN 1 RICE MILL & POLISHING MACHINE



OPERATOR'S MANUAL

- ✓ Make sure to read this User's Manual before installation and use.
- ✓ Store this User's Manual somewhere easily seen by the operator.
- ✓ Product warranty is included at the User's Manual.
- ✓ Color and design of each model can be changed without prior notice.

TABLE OF CONTENTS

- 03 SPECIFICATION OF THE MACHINE
- 04 PARTS NAME
- 05 CAUTION FOR SAFETY
- 06 OPERATIONAL PROCEDURE
- 07 TIME AND PROCEDURE ON CHANGING PARTS
- 09 PROPER MAINTENANCE
- 10 CHECKING POINT
- 13 WARRANTY GUIDELINES
- 14 PRODUCT PHOTOS



5 in 1 Rice Mill

LH 5001M GOLD



- Rice Bran Separator** ①
- Impurity Sorter** ②
- Stone Separator** ③
- Rice Husk Separator** ④
- Adjustable Polisher** ⑤

Specification

Output Power (HP)	5, 1/3
Percent Head Rice Index	87.11% (AMTEC Based Result)
Milling Recovery Index	68.1% (AMTEC Based Result)
Holding Capacity (kg)	40 kg
Output Capacity (kg per hour)	250-300 (Polished Rice)
Killowatt	4kW/Hr
Electricity	220v
Dimensions	
Length x Width x Height (mm)	1260 x 865 x 1532
Weight (kg)	208

Parts Name

- 01 Conveyor
- 02 Separator (inside part)
- 03 Hulling parts
- 04 Polishing lever
- 05 Adjustable polishing grade
- 06 Rock screening plate
- 07 Rock screener
- 08 Rock screening door
- 09 Smutted removing discharger
- 10 Stone discharger
- 11 Indicator board
- 12 Rice bran discharger
- 13 Unpolished rice modulator
- 14 Rice husk discharger
- 15 Unpolished rice door lever
- 16 Unpolished rice chamber
- 17 Unpolished rice casing
- 18 Machine breaker



Caution for Safety

- Thank you for choosing Leehwa LH5001M Gold Rice mill.
- Please read "Caution for Safety" thoroughly before using and using it accordingly.
- Precautions stated here contain important details about safely. Make sure to follow accordingly.



IF INSTRUCTION IS NOT OBSERVED, IT HAS A HIGH RISK TO CAUSE SEVERE INJURY OR DEATH.



IF INSTRUCTION IS NOT OBSERVED, IT HAS A HIGH RISK TO CAUSE SEVERE INJURY OR DEATH.



IF INSTRUCTION IS NOT OBSERVED, IT HAS A HIGH RISK OF ERROR OR PHYSICAL DAMAGE APPEARANCE.

Please follow the instruction below

- This machine is for 220V, and please use 60A earth leakage breaker when connecting electrical wire.
- Do not remodel or disassemble the machine randomly and do not put to other uses.
- Install the single switch out of reach of children. This may cause electric shock or injury.
- Do not insert any impurities into the hopper during operation. This may cause injury or malfunction.
- When installing electricity, please refer to the specification table of the machine to choose appropriate thickness of the electric wire.
- Do not pull out or bend the electric wire and turn off the earth leakage breaker when not using.
- Do not scratch, damage or bend the power cord by force. This may cause electric shock or fire.
- Do not install the machine where is humid or has direct contact with water. This may cause electric shock or malfunction.
- Do not put any heavy object on the hopper. This may cause damage or malfunction of the machine. Do not move or open the rear door of the machine during use. This may cause severe injury.
- The weight of the machine may cause injury while moving. Please carry with 4 or more adults.
- Do not wear loose clothes when operating the machine. Please wear simple clothes to prevent any safety accidents.

Operational Procedure

01. Make sure that the palay is ready to be milled. The recommended moisture content is at **least 15%.**
02. Clean the palay from impurities such as **stones, nails, dirt, and rice straws** before putting them in the tank.
03. Close the unpolished rice lever before adding the palay to **avoid clogging and overloading (3).**



04. After placing the palay, turn on the power switch (1) and the rock screen switch/vibrator (2).
05. When the machines start, slowly pull the unpolished rice lever (3). After that, the palay will go down to the urethane huller, and the conveyor will bring it up as unpolished/brown rice. When unpolished rice is already in the upper tank/hopper, slowly pull the polishing lever (4). If the quantity of unpolished rice is piled/dumped up in the upper hopper, you can control the quantity with the red dial on the right side of the machine near the hose of the rice husk.
06. Rice will go down for polishing. When the rice begins to come out, check and adjust the polishing degree of rice (5) as you want it to be. When you turn the dial, the needle of the A meter will react. It must not be over **28-30 ampere.**



07. 30 seconds later, after the work ends, close the unpolished rice door and polished rice door, and turn off switch (1).
08. After the operation, the rock screening switch/vibrator (2) must still be on. Place any container at the stone discharge (7) for stones, and rice will fall into it. Then pull down the red button (6) to bring down the stones and remaining rice on the screen. Turn off the switch for the rock screening/vibrator (2).

Time & Procedure

on changing parts

A. CONSUMMABLE PARTS

Here are some of the consumable parts you may replace often.



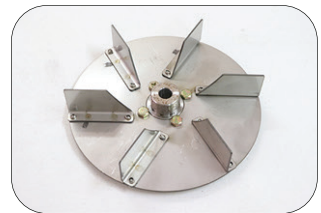
Urethane Huller



Impeller



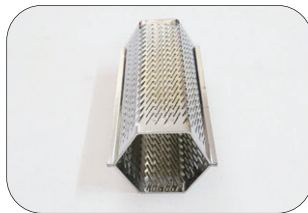
Blower Fan



Blower Fan



Polishing Screw



Polishing Screen Hexa



Polishing Screen Round



Urethane Casing



Urethane Cover



Hose



Conveyor Belt



Impurity Belt 37TS



Impeller Belt A-68



Polishing Belt A-69



Vibrator Belt A-42

Time & Procedure

on changing parts

B. TIME OF CHANGING

1. POLISHING SCREEN

When the rice coming out is not polished well, check the polishing screen and replace if it's broken. Usually polishing screen take long time to consume. If the palay has lots of stone or any related impurities, it will affect the life span of the parts. Polishing screen can be found below the polisher dial adjustment.

2. URETHANE HULLER

Urethane makes the quality of the rice good and 1st class rice can be obtained depending on the variety. It can reduce broken rice and increase your recovery. Urethane huller can be used for 4,000kg of palay before you may replace it. But note that urethane is the first part that will peel - off the palay and its life span will depend on the palay quality. It is very important that the palay must be clean first before you will put in the machine. Urethane will be consumed

3. CASING

Casing of the urethane and fans can get broken if there are stones and other hard materials that may cause its damage. If the palay or rice husk is going out from the casing, check and replace if it's broken.

4. FAN/IMPELLER

If the fan cannot blow will the rice husk, check it and replace if it's broken.

5. POLISHER/POLISHING SCREW

when the polishing/whitening of rice is already affected, which mean it cannot whiten anymore, check the polisher screw located at the center of polishing screen to check if the part needs to be change. When the spiral groove is already not visible, you need the change the polisher.

6. HOSES

Hoses need to check regularly. If the hoses are worn out/ teared-off, it needs to be change. There are four (4) kinds of hoses, check it regularly.

7. BELTS

Check belts if tensions are still okay. If the tension is loosened, it can be adjusted by adjusting the bolts or tensioner. If the belts have some cuts, better replace it to avoid cutting during the operation.

Proper Maintenance

Daily maintenance is very important to the machine life. Throughout the operator's manual, there are many illustrations and instructions regarding operational parameters. We fill these Do's and Don'ts of operating have been sufficiently addressed and adequate define appropriate operating practices. Machine life span will depend on how you will care of it. It is very important that proper maintenance and check-up is needed.

-
1. Machine recommended operation is 5 hours a day. 1 to 2 hours straight operation and rest for 15-20 minutes depending if the motor is hot or not. This is to prolong machine parts such as urethane huller and to preserve machine life as well.
 2. Make sure to attach the electric wire from machine to your breaker for the stability of electricity. You must choose 6-8mm wire size and not more than 5 meters long. If your breaker is far from where you want to put the machine, make sure to design breaker near the machine.
 3. Make sure that the palay you put in the machine must be clean. Separate impurities such as stones, metals, nails, chop woods, leaves, rice straws and other similar objects. These can damage the parts of the machine easily.
 4. Make sure that the hose is straight and don't block it or put extension. Just open it so the blower can blow well.
 5. After operation, always check the machines. Check for the powder not to be sticky with the machine body. Check the urethane part, polisher and in the powder discharge for some stones and other materials and dirt.

Checking Point

1. MACHINE SUDDENLY TURNS OFF WHEN YOU START IT.

Check if the electricity supply is 220V. Check if something blocks the machine.

2. AMPERE IS GOING UP TO ITS MAXIMUM DEGREE AND NOT RETURNING TO NORMAL.

Check the electric supply, it must be 220V. Check the machine sometimes it's over loaded and there's blocks in the door or hose so the machine cannot work.

3. CONVEYOR IS NOT WORKING.

Check the unpolished door or down the conveyor probably there's some block in it. Try to turn on the rock screen /vibrator switch without palay.

4. MACHINE IS NOISY THAN BEFORE.

Check for the belts. If the belt is loosening, tighten it. Check also if there are blocks in the hoses.

5. PALAY OR BROWN RICE IS GOING OUT FROM THE HULLER.

Check for the huller if it's damage already. Change it if it is broken. Check also the casing of the huller for some damages. Replace if necessary.

6. PALAY GOING UP FROM THE CONVEYOR IS MORE THAN UNPOLISHED RICE.

Check for the huller if it's damage already. Change it if it is broken. Check also the casing of the huller for some damages. Replace if necessary.

7. MACHINE IS WORKING BUT IT'S NOT POWERFUL.

Check for the supply of electricity. Check the capacitor found inside the motor. Replace if broken.

STOP! THIS IS NOT A PROBLEM

(1) GRAINS COME OUT TOGETHER WITH UNPOLISHED RICE DURING THE INITIATION AND FINAL STAGE

- ⊙ This is a normal state. Collect the grains and put them through the checking door to polish.

(2) IT COMES OUT BEING MIXED WITH CHAFF AND UNPOLISHED RICE TOGETHER.

- ⊙ You can see the air pressure modulator in the middle door. Slightly open and control the modulator.

(3) IT COMES OUT BEING MIXED WITH CHAFF AND RICE TOGETHER.

- ⊙ Clean the rice discharger thoroughly.

(4) YOU WANT TO REDUCE THE UNPOLISHED RICE, BUT IT IS NOT EASY.

- ⊙ Turn down the unpolished rice modulating switch on the right side of the machine.
- ⊙ Replace the weak springs in the tool pocket.

NOTE - the condition of unpolished rice depends on the breed of rice and its moisture.

(5) TOO MUCH FRAGMENTED RICE.

- ⊙ check an attrition of the rubber ring (urethane) in the unpolished rice chamber
- ⊙ It can be caused by moisture, breed, threshing (high speed centrifugal threshing).

It cannot be solved in the rice mill process.

DISMANTLING AND DISPOSAL Instructions

- (1) Disconnect the rice mill from the power source and ensure all moving parts have come to a complete stop before beginning dismantling.
 - (2) Remove any remaining rice grains or debris from the machine to prevent potential hazards during disassembly.
 - (3) Carefully disassemble the machine , taking care to avoid damage to any parts.
 - (4) Dispose of dismantled parts in accordance with local regulations for waste disposal. Separate any recyclable materials for appropriate recycling processes.
 - (5) Ensure that any hazardous materials or components are disposed of safely and in compliance with applicable laws and regulations.
 - (6) If unsure about the proper dismantling or disposal procedures, consult a qualified technician or contact the manufacturer for guidance.
 - (7) Do not attempt to dismantle or dispose of the rice mill without proper knowledge and precautions to avoid injury or environmental harm."
- ⦿ These instructions provide a general guideline for safely dismantling and disposing of the rice mill equipment.

WARRANTY GUIDELINES

Statement of Warranty

◎ WARRANTY PERIOD

- (1) We offer 12 months (1 year) for the machine from the date of purchase except when damaged due to improper use.
- (2) FIT Core warranty applies only to the machine/s you purchase for your use, and not for resale.
- (3) We warrant that each machine is free from defects in performance and workmanship.
- (4) The warranty period for the machine is a specified, fixed period commencing on your date of purchase. You may require to present proof of purchase or other similar proof of warranty entitlement.
- (5) During the warranty period, if the machine is not in good working order, FIT Core will do its best to teach, inform, notify and or fix it at no additional charge for labor except for the materials/spare parts needed.
- (6) Warranty of the machine includes motor itself. Consumable parts such Huller, Polisher, Fans, Casing and others – customer will buy it.
- (7) No refund available from your period of purchase.

◎ EXTENT OF WARRANTY

- (1) The warranty does not cover the repair of a machine resulting from accident, abuse, misuse, modification, unsuitable physical or operating environment, improper servicing and maintenance by you, or failure caused by a product for which FIT Core is not responsible.
- (2) The warranty is voided by removal or alteration of machine or parts identification labels.
- (3) Natural calamities beyond human control such as fire, flood, etc.

◎ NORMAL USE

◎ OTHERS

Thank you for trusting

Manufacturer's Information

Name:	LEEHWINDUSTRY CO.
Address:	22-23, Industrial Complex 3-gil 2, Waegwan-eup, Chilgok-gun, Gyeongsangbuk-do
Brand/Model:	5 IN 1 RICE MILL LH-5001M GOLD
Contact Number:	+82-54-975-5789
FAX:	+82-54-975-1882
E-Mail:	MASTER@LEE-HWA.CO.KR

www.lee-hwa.co.kr/

Dealer's Information

Name:	FIT COREA TRADING PHILS., INC.
Address:	10.D ARELLANO ST. BRGY. 135 BAGONG BARRIO, CALOOCAN CITY
Contact Number:	(02) 8922-6518 0929 700 2000
E-Mail:	fitcorea@gmail.com

www.fitcorea.com

This rice mill is designed for efficiently processing raw rice grains into polished rice suitable for consumption. It is not intended for milling other grains or non-agricultural materials.